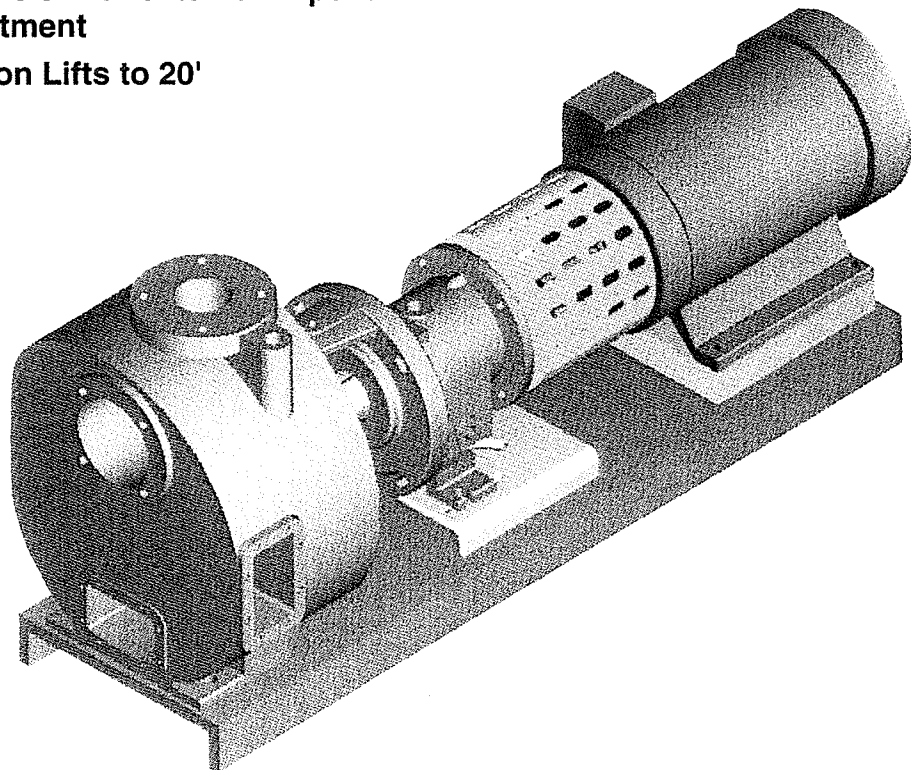


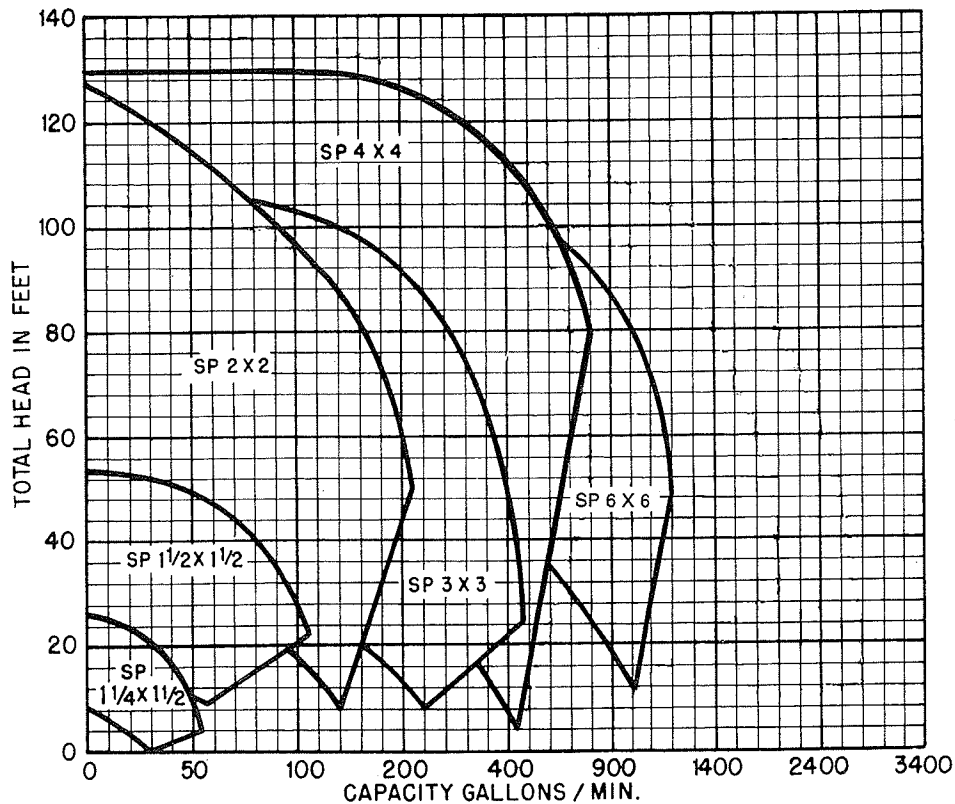
8000 SERIES CENTRIFUGAL SELF PRIMING PUMPS

FEATURES:

- Heads up to 130' @ 1750 R.P.M.
- Flows up to 1200 G.P.M. @ 1750 R.P.M.
- Clean out ports standard on models
1½x1½ Thru 6x6
- Available with Flapper valve
- Available with external impeller
adjustment
- Suction Lifts to 20'

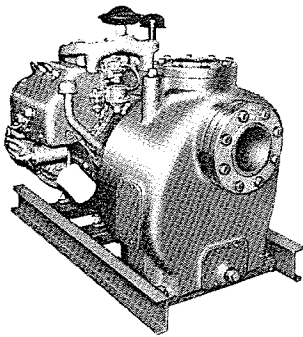


SELECTION CHART FOR 1750 R.P.M.

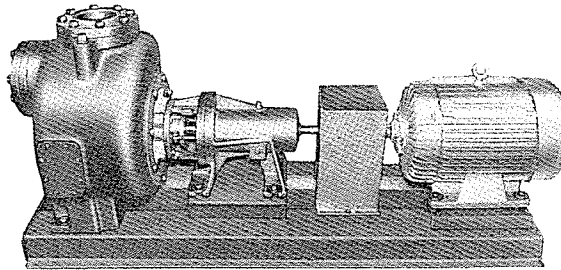


FOR INDIVIDUAL PUMP PERFORMANCE CURVES SEE PAGES 223-228

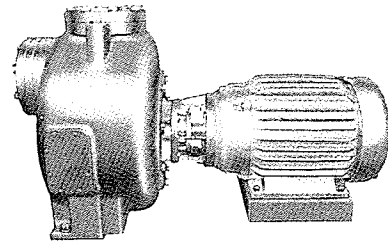
GUSHER'S SELF PRIMERS



Gasoline or Diesel Engine Driven Style



Base Mounted Style



Close Coupled Style

Designed for Wide Range of Service, From Agricultural to Industrial:

- Capacities to 1200 G.P.M. @ 1750 R.P.M.
- Heads to 130 @ 1750 R.P.M.
- Suction Lifts to 20'.
- Temperatures to 600°F.
- Services—Filtration, Irrigation, Dewatering, Transfer, Industrial Sump, Shallow Sump Washers, Tank Car Unloading

Design Features:

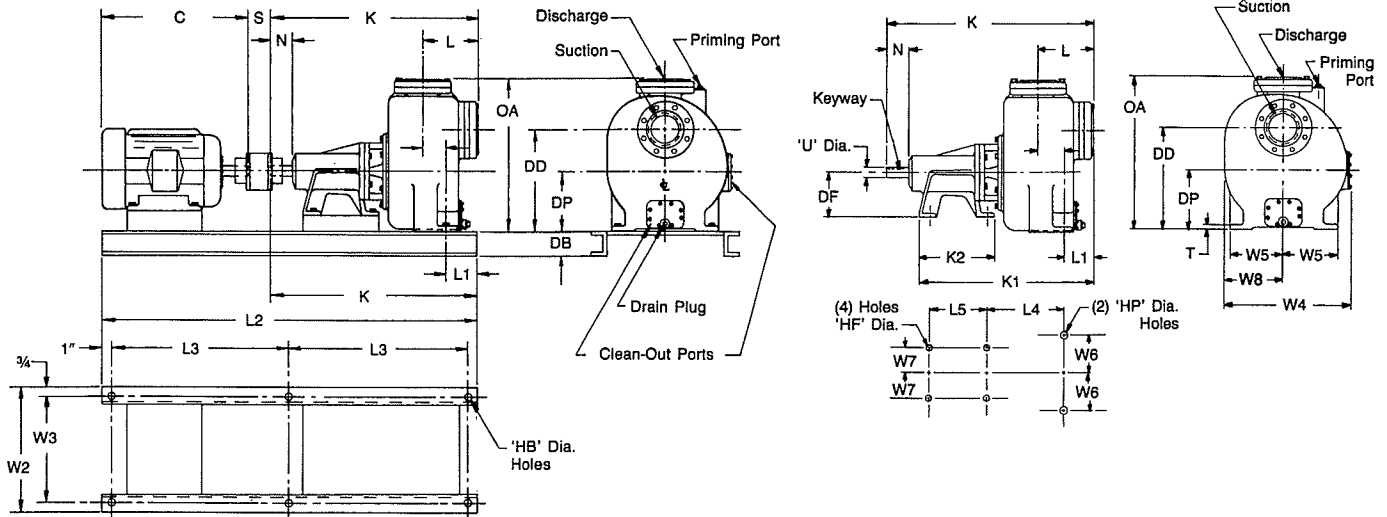
- Heavy Duty Construction w/Wear Plate as Standard Construction
- Back Pull-Out for Ease of Inspection and Low Cost Maintenance

- Clean-Out Ports for Fast Removal of Foreign Objects
- Semi-Open Impellers
- Priming and Air Separation Accomplished Within Casing. No External Valves, Air Separator or Priming Chamber Required.
- 316 S.S. Shaft Sleeve and Mechanical Seal Standard

Optional Features:

- Various Drives Available: Electric Motor, Gasoline Engine, Diesel Engine, Pedestal and Base Mounted Styles
- External Impeller Adjustment for Renewable Efficiency
- Flapper Valve
- Packing Available Upon Request

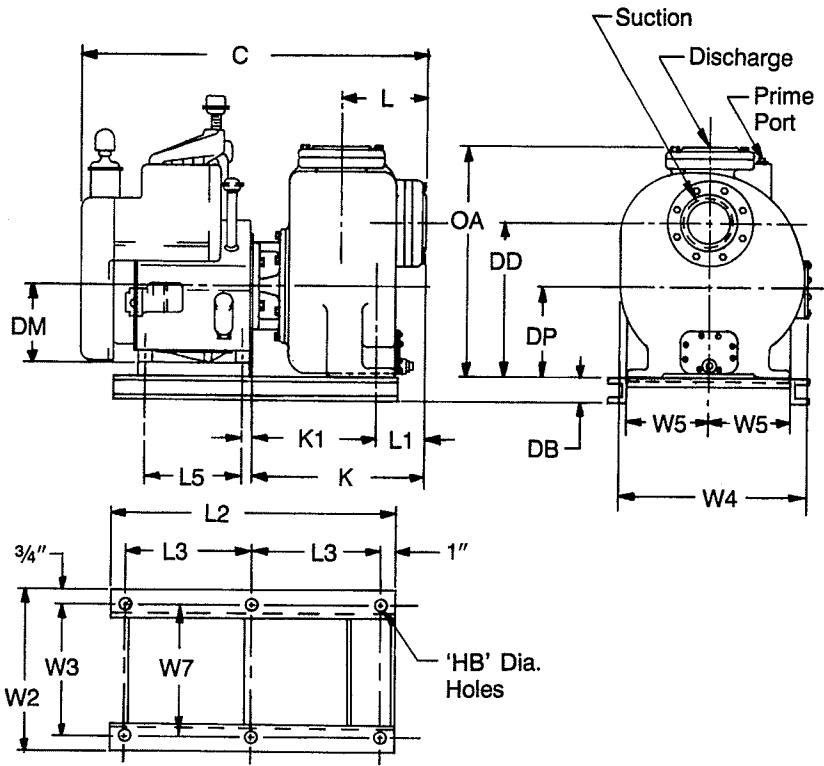
BASE MOUNTED STYLE "GBM" & PEDISTAL MOUNT STYLE "C"



MODEL NO.	Discharge N.P.T.	Suction N.P.T.	Prime Port N.P.T.	Power Frame	N.E.M.A. Fr. Size	DIMENSIONS IN INCHES													
						C	DB	DD	DP	HB	HF	HP	K	K1	K2	Keyway	L	L1	
SP1½x1½-5SE	1¼	1½	¾	51H	56 Thru 145T	10½	3	7½/₃₂	4¼	7/₁₆	¾ Slots	—	20¾	15¾	9½	¼x½x1½	39/₁₆	—	
SP1½x1½-7SE	1½	1½	¾	51H	56 Thru 182T	12	3	6¾	5¼	7/₁₆	¾ Slots	7/₁₆	28¾	23¾	9½	¼x½x1½	67/₁₆	37/₁₆	
SP2x2-11SE	2	2	¾	51H	143T & 145T	10½	3	14	8	9/₁₆	¾ Slot	5/₈	29¾	241/₁₆	9½	¼x½x1½	615/₁₆	49/₃₂	
					182T & 182T	12													
					213T & 215T	15													
SP3x3-10SE	3	3	1	51H	145T Thru 184T	145T/10½ 184T/12	3	14½	8½	9/₁₆	¾ Slot	½ Slot	31	26¼	9½	¼x½x1½	8½	4¾	
					213T & 215T	15													
					184T	12													
SP4x4-11SE	4	4	1	51H	213T/215T	15	3	16	9½	11/₁₆	¾ Slot	11/₁₆	32¾	27¾	9½	¼x½x1½	89/₁₆	415/₁₆	
				52H	254T	18													
				256T Thru 286T	22														
SP6x6-10SE	6	6	1	52H	215T	15	4	18¾	11¼	11/₁₆	¾ Slot	¾	38	33	12	¾x3/₁₆x2½	105/₁₆	51½/₁₆	
					254T & 256T	18 & 19½													
					284T & 286T	20¾ & 22													
					324T	23													
					53H	326T													24½

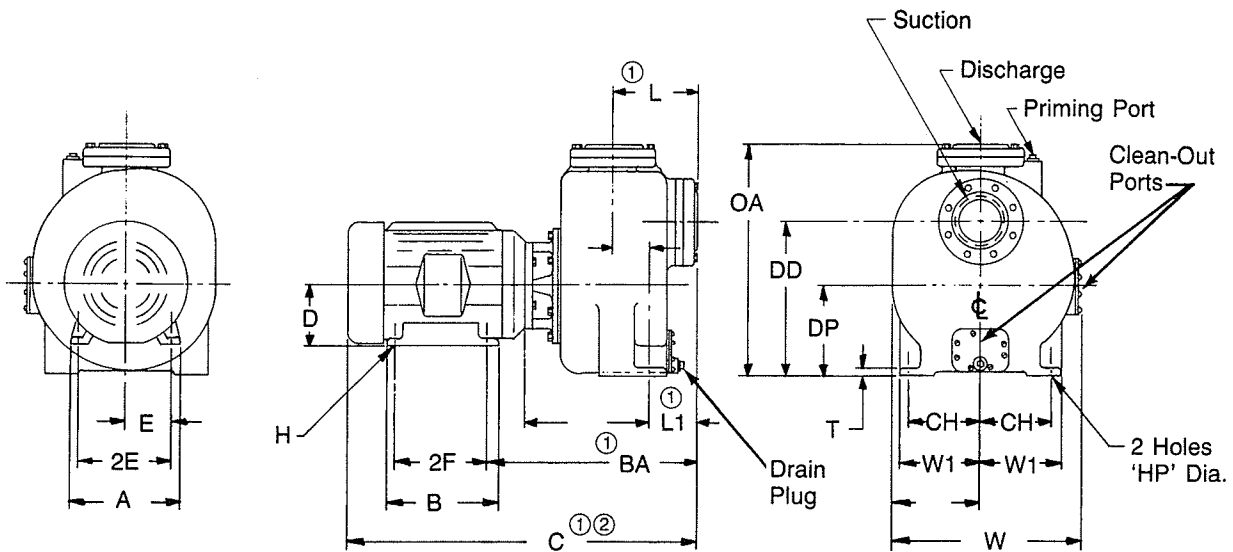
MODEL NO.	Power Frame	N.E.M.A. Fr. Size	DIMENSIONS IN INCHES (Continued)																
			L2	L3	L4	L5	N	OA	S	T	U	W2	W3	W4	W5	W6	W7	W8	DF
SP1½x1½-5SE	51H	56 thru 145T	36	17	—	7	3½	10	3½	—	1¼	10	8½	8½	4¼	—	2½	4¾	5¼
SP1½x1½-7SE	51H	56 thru 182T	36	17	12½/₁₆	7	3½	10	3½	¾	1¼	10	8½	9¾	315/₁₆	33/₁₆	2½	6½	5¼
SP2x2-11SE	51H	143T/145T	44	21	12½	7	3½	13¼	3½	½	1¼	13	11½	14½	5½	4	2½	7¾	5¼
		182T/184T	46	22															
		213T/215T	48	23															
SP3x3-10SE	51H	145T thru 184T	46	22	133/₁₆	7	3½	21¾	3½	½	1¼	14	12½	17¾	5½	4½	2½	8½/₁₆	5¼
		213T & 215T	50	24															
SP4x4-11SE	51H	184T	48	23	149/₁₆	7	3½	23¾	3½	¾	1¼	20	18½	19½	8½	7½	2½	9¼	5¼
		213T/215T	51	24½															
		254T	54	26															
SP6x6-10SE	52H	256T thru 286T	60	29	1611/₁₆	9¼	3½	27¾	5	¾	1½	24	22½	22¾	10	8¾	3¾	109/₁₆	7
		215T	58	28															
		254T & 256T	62	30															
		284T & 286T	65	31½															
		324T	66	32															
53H	326T	72	35	12	5½	2	5	9											

ENGINE DRIVEN STYLE 'D'



MODEL	Disch. N.P.T.	Suction N.P.T.	Prime Port N.P.T.	Engine and R.P.M.	DIMENSIONS IN INCHES																			
					C	DB	DD	DM	DP	HB	K	K1	L	L1	L2	L3	L5	OA	W2	W3	W4	W5	W7	
SP1½x1½-5SE	1¼	1½	¾	4.3 HP @ 3600 RPM	17½	3	7½	4¾	4¼	7/16	8	1¾	3¾	—	15	13	3½	10	10	8½	8½	4¼	6¾	
SP1½x1½-7SE	1½	1½	¾	4.3 HP @ 3600 RPM	26½	3	6½	4¾	5¼	5¼	7/16	16	2¾	67/16	37/16	24	11	3½	10	14	12½	9¾	3½	6¾
				6.7 HP @ 3600 RPM	28			3¾								7½	7½							
				8.5 HP @ 3600 RPM	26			12								3¾	10%							
SP2x2-11SE	2	2	¾	4.3 HP @ 3600 RPM	26½	3	14	4¾	5¼	8	9/16	17	3¾	6½	4¾	24	11	3½	13¾	14	12½	14½	5½	6¾
				6.7 HP @ 3600 RPM	28¾			3¾								7½	7½							
				8.5 HP @ 3600 RPM	29			3¾								10%								
				13.6 HP @ 3600 RPM	29			6¼								16	14½							
				25 HP @ 3600 RPM	33½			8								17½	16							
SP3x3-10SE	3	3	1	4.3 HP @ 3600 RPM	28	3	14½	4¾	5¼	8½	9/16	18¾	3¾	8½	4¾	24	11	3½	21½	14	12½	17½	5½	6¾
				6.7 HP @ 3600 RPM	29¾			3¾								7½	7½							
				8.5 HP @ 3600 RPM	30½			3¾								10%								
				13.6 HP @ 3600 RPM	30½			6¼								16	14½							
				25 HP @ 3600 RPM	35			8								17½	16							
				50 HP @ 3600 RPM	41			8								10½	13¾							
SP4x4-11SE	4	4	1	8 HP @ 2200 RPM	31	4	16	4¾	8	9½	1½	20	2	8¾	4½	26	12	4	23¾	20½	19	19½	8½	7½
				14.2 HP @ 2200 RPM	32½			8								10%								
				21 HP @ 2200 RPM	36½			8								10%								
				26.5 HP @ 2200 RPM	39½			8								10%								
				29.6 HP @ 2200 RPM	38¾			8								10%								
				42 HP @ 2200 RPM	44			8								10%								
SP6x6-10SE	6	6	1	14.2 HP @ 2200 RPM	39¼	4	18¾	8	11¼	1½	23½	1½	10½	5½	36	17	4	27¾	24	22½	22¾	10	7½	
				26.5 HP @ 2200 RPM	42¾																		11½	10%
				29.5 HP @ 2200 RPM	42																		11½	10%
				36 HP @ 2200 RPM	42½																		11½	10%
				42 HP @ 2200 RPM	45½																		11½	10%
56.7 HP @ 2200 RPM	45	11½	10%																					

CLOSED COUPLED STYLE 'CC'



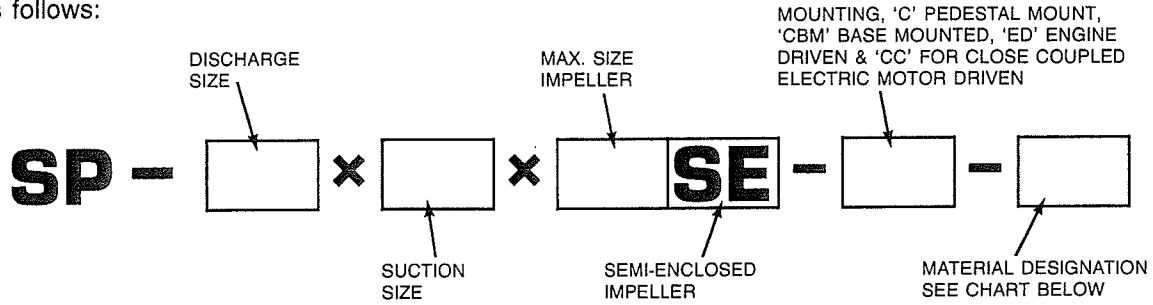
MODEL	H.P.	N.E.M.A. Frame Size	N.P.T. Disch.	N.P.T. Suction	N.P.T. Prime Port	DIMENSIONS IN INCHES																			
						A	B	BA	C	CH	D	DD	DP	E	2E	2F	H	HP	L	L1	OA	T	W	W1	
SP1½x1½-5SE	½ & ¾	56J	1¼	1½	¾	6½	4½	10¾	17½/16	—	3½	7½/32	4¼	27/16	4⅞	3	1½/32	—	39/16	—	10	—	8½	4¼	
	1								185/16																
	1½								187/8																
	2								197/8																
	2								20¾																
SP1½x1½-7SE	1	143JP	1½	1½	¾	7	5½/16	187/8	27½/16	33/16	3½	65/8	5¼	2¾	5½	4	1½/32	7/16	67/16	37/16	10	¾	9¾	315/16	
	1½																								145JP
	2																								182JP
	3																								182JP
SP2x2-11SE	1½	143JP	2	2	¾	7	5½/16	197/8	28½/16	4	3½	14	8	2¾	5½	4	1½/32	5/8	615/16	49/32	13¼	¾	14½	5½	
	2																								145JP
	3																								182JP
	5																								184JP
	7½																								213JP
SP3x3-10SE	2	145JP	3	3	1	7	5½/16	217/16	301/16	4½	4½	14½	8½	3¾	7½	4	1½/32	9/16	8½	4¾	21½	½	17½	5½	
	3																								182JP
	5																								184JP
	7½																								213JP
	10																								215JP
SP4x4-11SE	5	184JP	4	4	1	9	65/8	23½/16	3215/16	7½	4½	16	9½	3¾	7½	5½	13/32	11/16	89/16	415/16	237/8	¾	19½	8½	
	7½																								213JP
	10																								215JP
	15																								254JP
	20																								256JP
	25																								284JP
	30																								286JP
SP6x6-10SE	10	215JP	6	6	1	10½	8½	275/8	395/8	8¾	5¼	18¾	11¼	4¼	8½	7	13/32	13/16	109/16	511/16	279/8	¾	22¾	10	
	15																								254JP
	20																								256JP
	25																								284JP
	30																								286JP
	40																								324JP
	50																								326JP

1 Includes Flapper Valve
2 Varies With Motor Manufacturer

3 Dim. For 230/460 V.-60 Cy.-3 Ph.-TEFC Motors
4 Dim. For Estimating Only, Certified Drawing Supplied Upon Request

ORDERING INFORMATION

Order the Gusher 8000 Series Pump to meet your needs by model number. The model number should be specified as follows:



EXAMPLE: For ordering a Coupled Base Mounted Pump with a 2" discharge and 2" diameter suction with impeller of 11" maximum. Ductile iron construction. The model number for ordering description would be: SP-2x2x11 SE-CBM-DI.

Materials of Construction

Material Designation	Type
D.I.	All iron construction, ductile iron
C.I.	All iron construction, cast iron
B.F.	Bronze fitted
S.F.	Stainless steel fitted

Motor Specifications

Please furnish the following information on all orders: Horsepower, Frame Size, Voltage, RPM, Hertz and Phase. If a special motor is required specify: i.e. Delco GM-7EQ.

The **Base Mounted Pump** is designed to accept a Nema Frame Foot Mounted Motor.

Note: if motor is ordered it will be factory mounted unless otherwise specified.

We Can Help

Our sales department will help you select the proper pump for your application. Call or write. Performance Curves are available on all pumps.

