

GUSHER®

MSD4

MOTOR DRIVEN MACHINE TOOL & INDUSTRIAL COOLANT PUMP

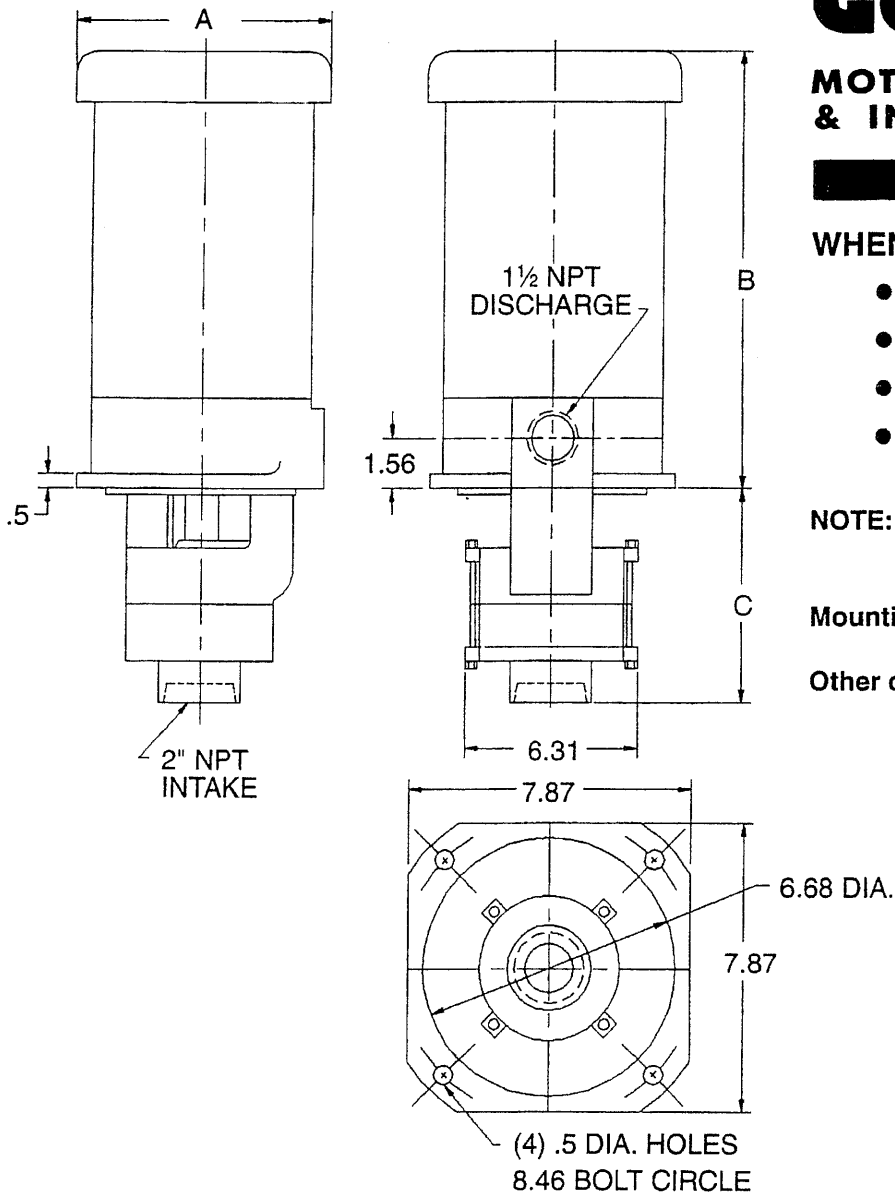
WHEN ORDERING SPECIFY

- Model MSD4
- Number of Stages
- Conditions GPM @ TDH'
- Motor Horse Power and Current Characteristics.

NOTE: 208/230/460 volts
60 cycles - Standard

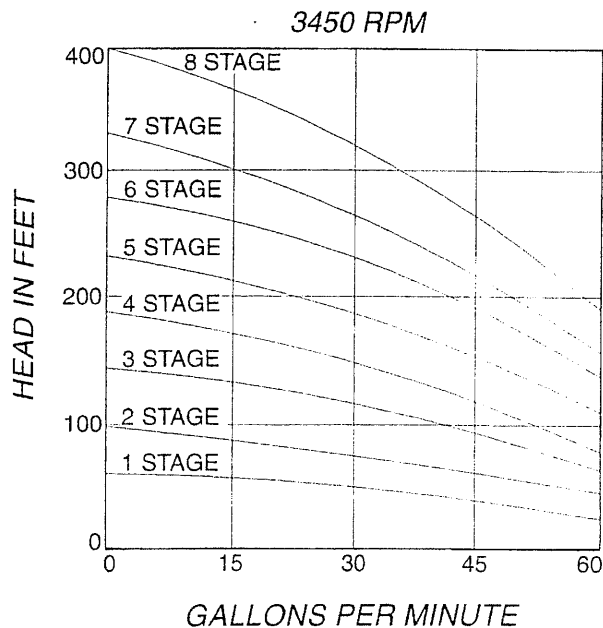
Mounting Hole Size = 6.75

Other current characteristics available.



DIMENSIONS IN INCHES

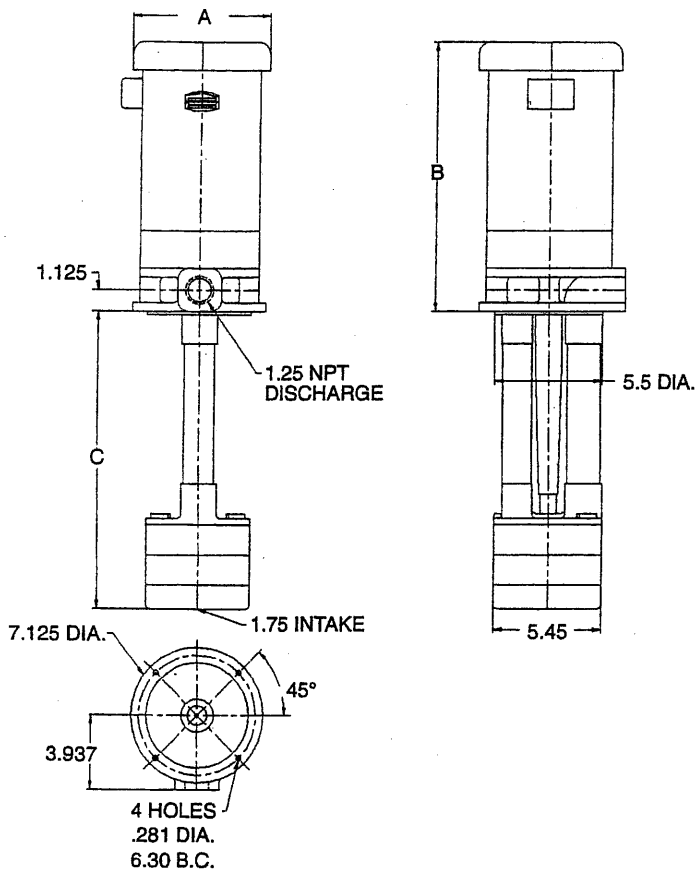
NO. OF STAGES	HORSE POWER	A	B	C
1	1.0	7.25	12.0	5.25
2	2.0	7.25	13.0	6.68
3	3.0	7.25	13.68	8.12
4	5.0	8.50	15.18	9.56
5	5.0	8.50	15.18	11.0
6	5.0	8.50	15.18	12.43
7	7.5	8.50	16.93	13.87
8	10.0	10.25	17.43	15.31



GUSHER

MSV

MOTOR DRIVEN MACHINE TOOL & INDUSTRIAL COOLANT PUMP



WHEN ORDERING SPECIFY

- Model MSV
- Number of Stages
- Gallons Per Minute
- Head in Feet
- Motor Horse Power and Current Characteristics
- 'C' Dimension In Inches

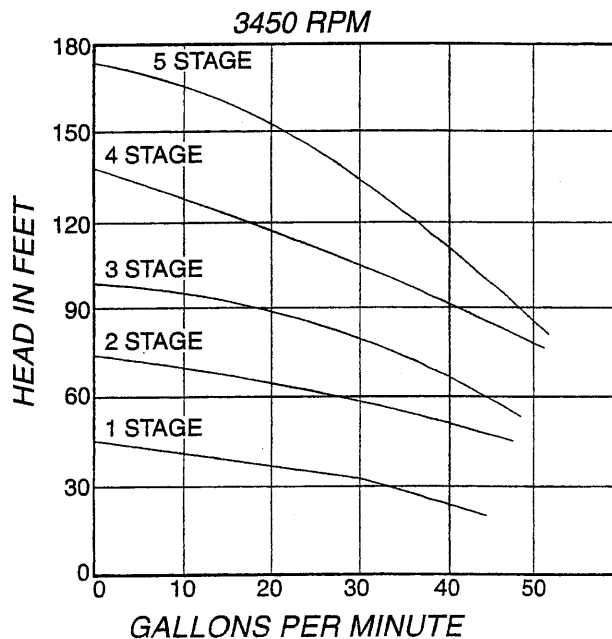
NOTE: 230/460 60 cycles – Standard

Other current characteristics available.

Mounting Hole Size = 5.625

DIMENSIONS IN INCHES

STAGES	HORSE POWER	A	B	C
MSV-1	1	7.0	13.12	3.68
MSV-2	2	7.0	14.12	5.25
MSV-3	3	7.0	14.87	6.81
MSV-4	3	7.0	14.87	8.37
MSV-5	5	8.5	16.12	9.93

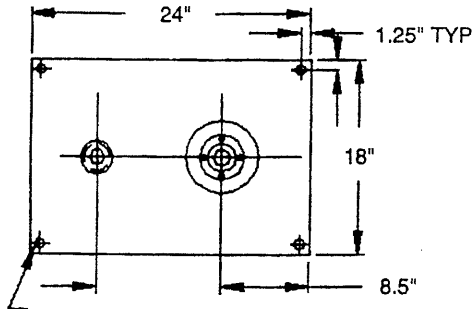


* Longer Lengths Available.
Consult Factory For Details.

GUSHER[®]

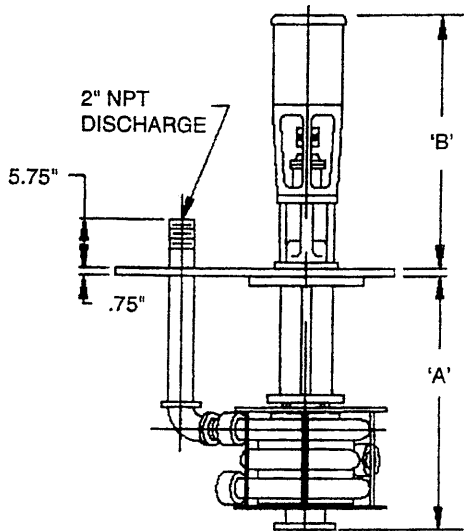
MODEL
MS 2x4

MULTI-STAGE CENTRIFUGAL PUMP

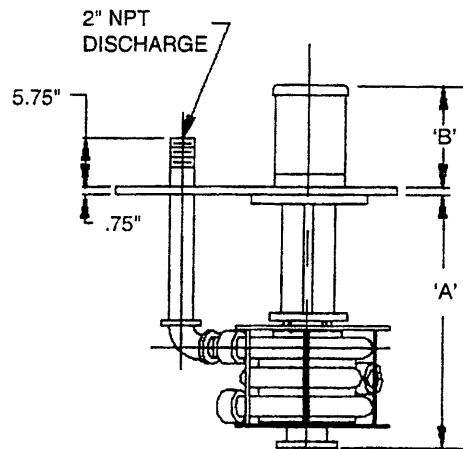


WHEN ORDERING SPECIFY

- Model MSV
- Length Needed Below Plate ('A' Dimension)
- Number of Stages
- Style of Pump Needed
- Gallons Per Minute
- Total Dynamic Head



CDM STYLE



CC STYLE

'B' DIMENSION VARIES PER HORSEPOWER
AND MOTOR MANUFACTURE

'A' DIMENSION VARIES PER
SUMP DEPTH

