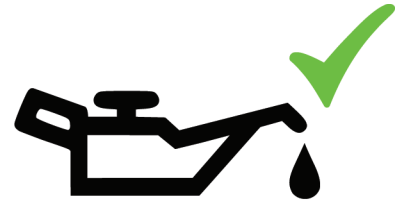
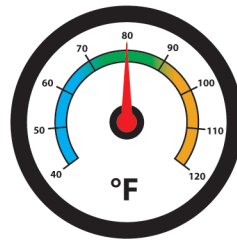




PROPER PUMP STORAGE

KEEP THIS GUIDE FOR REFERENCE



MOTOR STORAGE

Refer to motor manufacturer's storage guidelines.

SHORT TERM STORAGE

Any length of time exceeding one (1) month, but not more than six (6) months.

Pumps are manufactured for efficient performance following long inoperative periods in storage. For best results, pumps can be stored, as factory assembled, in a dry atmosphere with consistent temperatures for up to six (6) months.

LONG TERM STORAGE

Any length of time exceeding six (6) months, but not more than twenty four (24) months.

1. Store pump in its original shipping container, or other secure container.
2. Prior to storage, thoroughly drain pump of any and all fluid.
3. Store indoors in a temperature controlled environment that is consistently maintained at temperatures between 40° and 120° F.
4. Protect equipment from temperature and humidity extremes, and exposure to excessive dust, moisture and vibration.
5. Rotate the shaft several turns every four (4) to six (6) weeks.
6. Maintain written documentation of shaft rotation intervals to be made available upon request.
7. For cast iron pumps, treat with WD-40 (or equivalent) prior to storage to prevent rust.
8. Cover the suction and discharge flange openings unless connected to piping.
9. Before initial startup, rotate impeller by hand to assure seal and impeller rotate freely.

DOWNLOAD FULL MANUAL FROM OUR WEBSITE

www.Gusher.com | 859.824.5001



RC22-032/02-2023