



A RUTHMAN COMPANY

Vortex Series Vertical Pumps

VORTEX
V11019-AVDSE
1750 RPM

Gusher Vortex Series Vertical pumps provide years of trouble-free, low maintenance operation in applications with high levels of solids or entrained air.

Vortex pumps handle solids and fibrous materials without clogging. Their design moves liquids and oils containing up to 30% entrained air with no adverse effects on suction performance. Low flows are not a problem for Vortex pumps, as the design allows throttling to a low performance range unacceptable to many centrifugal pumps.

The AVD model features a specially designed housing that discharges vertically. This results in a more compact footprint than adding a pipe elbow to a pump with side discharge construction.



Key Specifications

Type: Vortex Centrifugal End Suction

Flow: Up to 110 gpm

Head: Up to 32' TDH

Liquid Temp: Max 180° F

Max Solid Size: .5"

Motor Type: TCZ Frame

Intake: 2"

Discharge: 1.5"

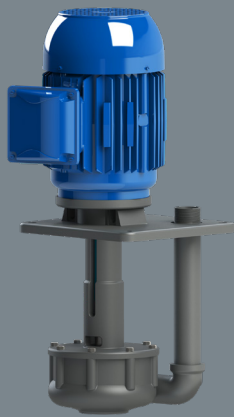
Power: 1 hp, 1.5 hp, and 2 hp

Features

- Recessed impeller handles solids and fibrous material without clogging
- Durable one-piece shaft eliminates risk of coupling misalignment
- Choice of materials for process chemical compatibility
- Renewable shaft sleeves and bushings protect shaft from wear
- VFD compatible motors to suit application needs
- Sealless design reduces maintenance by eliminating the need for failure-prone seals

Options

- Cast Iron or 316 Stainless Steel construction
- Choice of 1 or 3 phase motor
- Extended shafts (6", 12", 18", or 24" standard; custom available, consult engineering)
- Impeller variations: 316 Stainless Steel



Low Maintenance

- Long service life
- Renewable shaft sleeve and bushings

Custom Design

- Choice of materials
- Choice of pump length
- Choice of bushing material

Applications

- Agriculture
- Fibrous Waste
- Sludge
- Shavings
- Swarf
- Paper pulp
- Wastewater



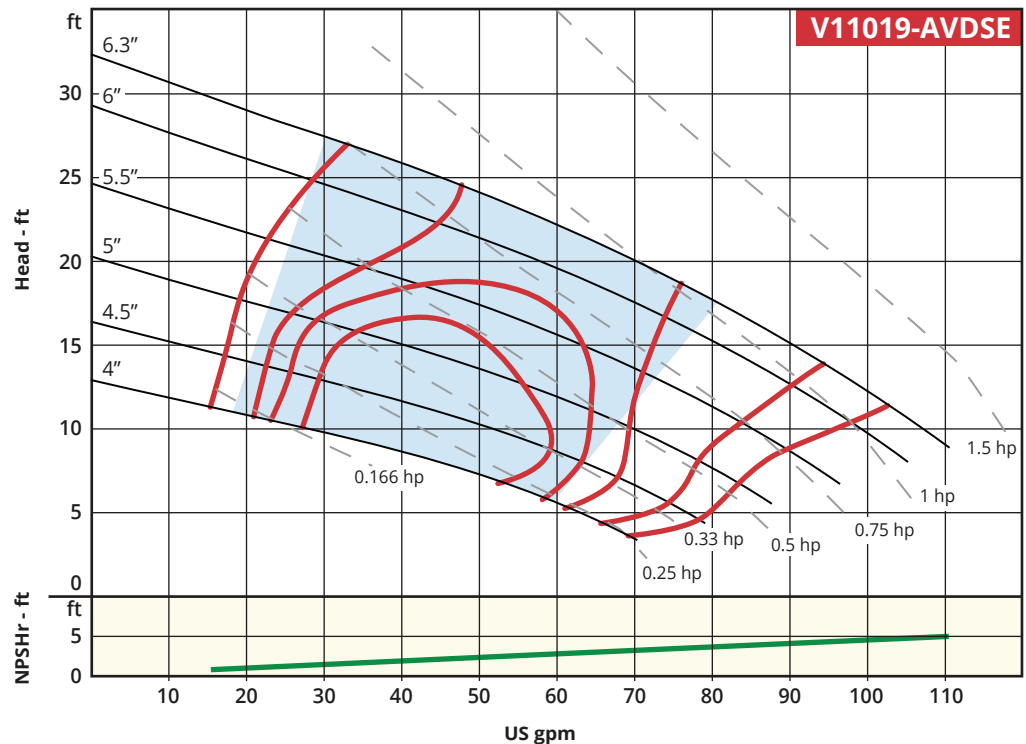
A RUTHMAN COMPANY

www.Gusher.com
Info@Gusher.com
859.824.5001

Performance Curve

1750 RPM

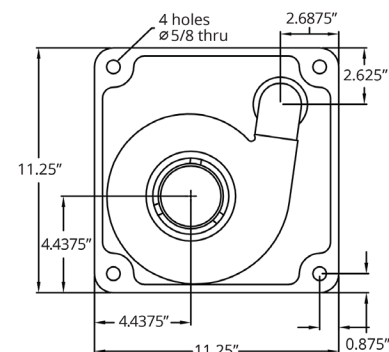
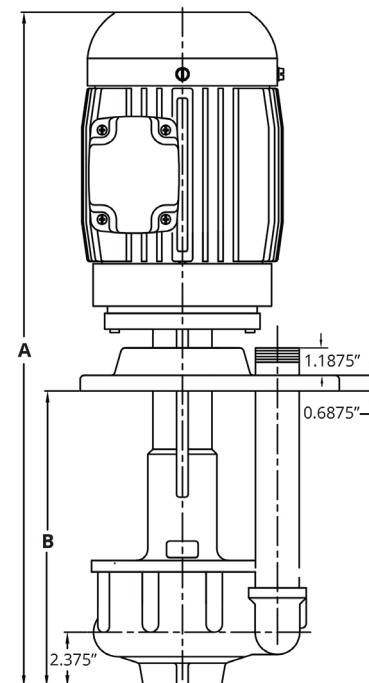
Recommended Operating Range



V11019-AVDSE are available in 1 hp, 1.5 hp and 2 hp models. Other hp shown for reference only.

Dimensions*

HP	Total Length (A)	Below Bracket to Intake (B)	Weight (lbs)
1	27.00"	12.875"	116
1.5	28.00"	12.875"	126
2	28.00"	12.875"	131



For extended lengths (6", 12", 18", 24", or custom), add extension length to Total Length

*For reference only; not for construction. Contact Gusher Engineering for certified drawings.