



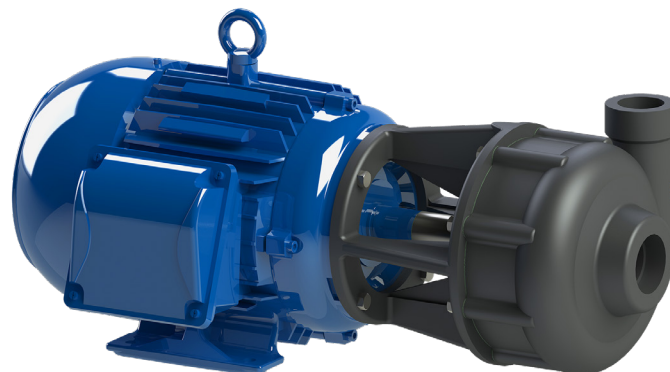
A RUTHMAN COMPANY

# Vortex Series Horizontal Pumps

VORTEX  
V11019-AHSE  
1750 RPM

Gusher Vortex Series Horizontal pumps provide years of trouble-free, low maintenance operation in applications with high levels of solids or entrained air.

Vortex pumps handle solids and fibrous materials without clogging. Their design moves liquids and oils containing up to 30% entrained air with no adverse effects on suction performance. Low flows are not a problem for Vortex pumps, as the design allows throttling to a low performance range unacceptable to many centrifugal pumps.



## Key Specifications

**Type:** Vortex Centrifugal Ends Suction

**Flow:** Up to 110 gpm

**Head:** Up to 32' TDH

**Liquid Temp:** Max 180° F

**Max Solid Size:** .5"

**Motor Type:** Standard JP Motor

**Intake:** 2"

**Discharge:** 1.5"

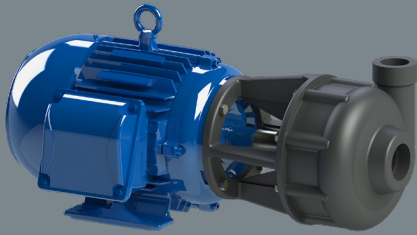
**Power:** 1 hp, 1.5 hp, 2 hp and 3 hp

## Features

- Back pullout design reduces service downtime
- Durable one-piece shaft eliminates risk of coupling misalignment
- Renewable shaft sleeve protects shaft from wear
- Mechanical seal prevents leakage

## Options

- Cast Iron, 316 Stainless Steel or 28 Chrome construction
- Choice of 1 or 3 phase motor
- Multiple mechanical seal materials
- Impeller variations: 316 Stainless Steel
- Seal flush line addition



## Low Maintenance

- Long service life
- Back pullout design
- Renewable shaft sleeve

## Custom Design

- Choice of materials
- Choice of seals
- Choice of impellers

## Applications

- Agriculture
- Fibrous Waste
- Sludge
- Shavings
- Swarf
- Paper pulp
- Wastewater



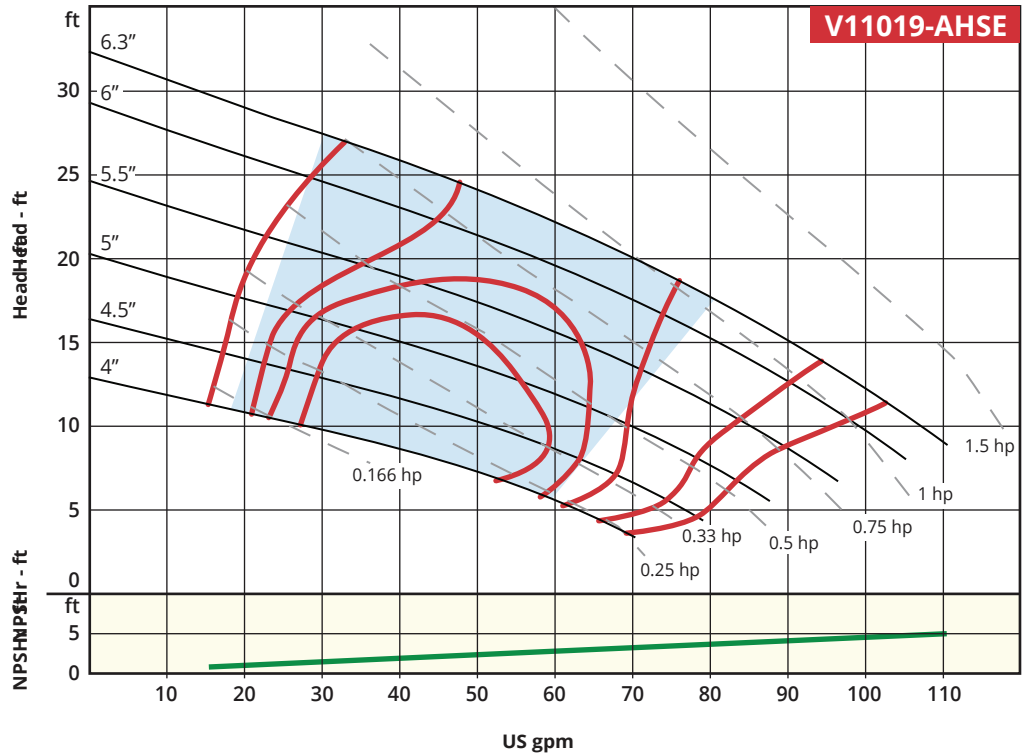
A RUTHMAN COMPANY

www.Gusher.com  
Info@Gusher.com  
859.824.5001

## Performance Curve

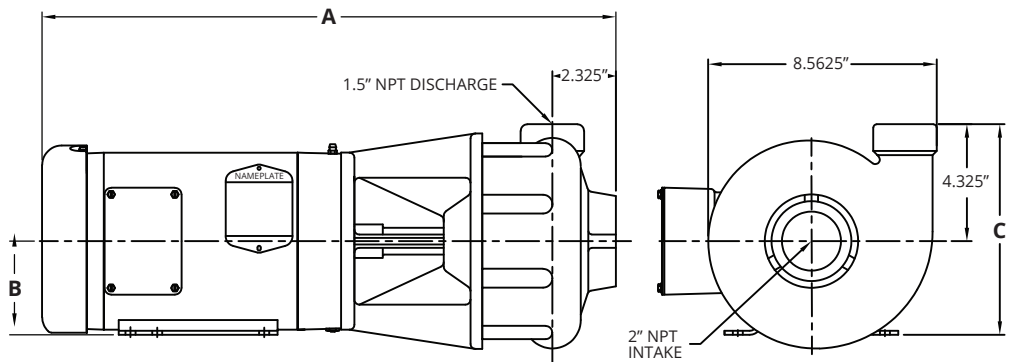
1750 RPM

### Recommended Operating Range



V11019-AHSE are available in 1 hp, 1.5 hp, 2 hp and 3 hp models. Other hp shown for reference only.

## Dimensions\*



HP	Total Length (A)	Motor Center to Foot (B)	Total Height (C)	Weight (lbs)
1	22.00"	3.50"	8"	80
1.5	22.50"	3.50"	8"	90
2	22.50"	3.50"	8"	95
3	22.00"	4.50"	9"	120

\*For reference only; not for construction. Contact Gusher Engineering for certified drawings.

\*Motor dimensions may vary slightly by motor manufacturer